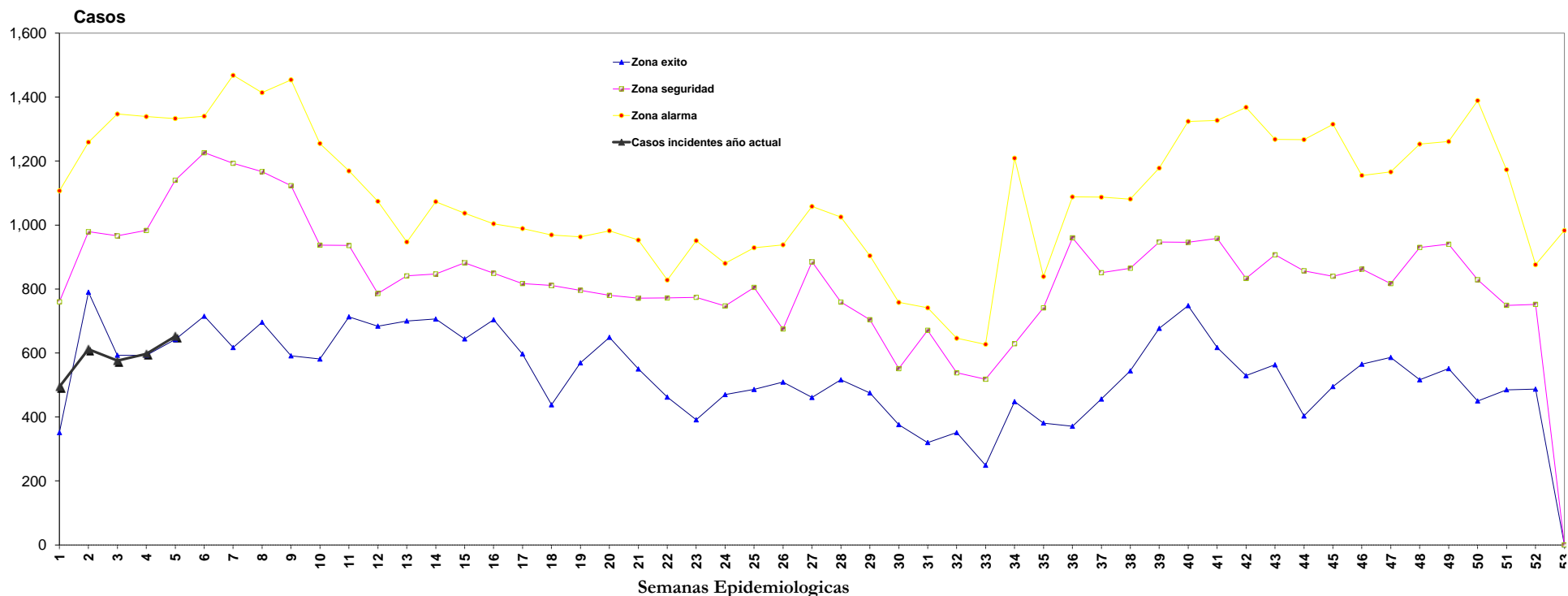


CANAL ENDEMICO JURISDICCION SANITARIA No. III DE CUAUTLA DE: IRAS EN MENORES DE 5 AÑOS 2020

Semanas Epidemiológicas																																																						
AÑOS	1	2	3	4	5	6	7	8	9	10	11	12	13	14	15	16	17	18	19	20	21	22	23	24	25	26	27	28	29	30	31	32	33	34	35	36	37	38	39	40	41	42	43	44	45	46	47	48	49	50	51	52	53	
2013	869	1,060	1,322	1,199	1,230	1,292	1,193	1,293	1,241	1,255	1,129	1,002	890	955	927	1,004	988	949	963	982	732	772	856	880	929	938	1,058	1,025	904	758	715	646	627	669	839	1,088	1,087	1,080	1,178	1,324	1,287	1,368	1,022	1,059	1,017	962	986	937	1,205	1,044	848	752	0	
2014	763	979	966	1,131	1,140	1,269	1,271	1,289	1,123	1,140	1,169	1,074	947	1,073	1,037	911	817	811	838	881	953	828	951	747	821	655	895	905	801	695	671	609	589	650	791	974	1,039	1,081	1,029	1,100	1,327	1,335	1,268	1,267	1,315	1,155	1,113	1,253	1,261	1,389	1,173	876	983	
2015	1,107	1,259	1,347	1,339	1,333	1,340	1,254	1,167	1,272	937	959	939	917	918	916	849	824	922	849	716	781	772	922	838	810	801	891	832	769	723	741	623	593	618	781	1,014	884	1,064	1,120	1,246	1,108	1,013	981	972	1,062	1,018	1,166	1,199	1,181	1,017	855	799	0	
2016	760	870	1,072	834	1,182	1,226	1,468	1,414	1,454	1,164	936	741	841	847	882	931	989	969	796	897	795	747	774	817	805	860	885	759	704	530	692	538	518	629	741	864	851	865	799	946	958	833	841	708	840	862	817	930	940	829	749	811	0	
2017	683	799	727	872	836	833	851	898	906	891	890	786	825	829	644	704	612	556	667	739	710	559	673	597	726	584	571	517	547	551	467	443	516	544	725	960	657	619	947	806	623	599	563	403	495	647	620	672	565	450	485	487	0	
2018	638	790	878	983	873	775	811	907	860	837	844	726	745	804	684	720	677	704	617	780	771	823	733	606	594	675	821	656	640	545	480	476	397	448	595	665	606	671	750	762	723	529	667	480	595	565	586	653	580	505	537	537	0	
2019	351	1,026	593	593	642	715	617	696	591	581	713	684	700	706	719	729	597	438	569	649	550	462	391	470	486	509	461	516	475	376	320	351	249	448	1,209	381	371	456	544	677	748	617	814	907	857	781	727	639	516	551	474	596	587	0
TOTAL	5,171	6,783	6,905	6,951	7,236	7,450	7,465	7,664	7,447	6,805	6,640	5,952	5,865	6,132	5,809	5,848	5,504	5,349	5,299	5,644	5,292	4,963	5,300	4,955	5,171	5,022	5,582	5,210	4,840	4,178	4,086	3,686	3,489	4,767	4,853	5,936	5,580	5,924	6,500	6,932	6,643	6,491	6,249	5,746	6,105	5,936	5,927	6,160	6,283	5,708	5,243	4,849	983	
Q1	351	790	593	593	642	715	617	696	591	581	713	684	700	706	644	704	597	438	569	649	550	462	391	470	486	509	461	516	475	376	320	351	249	448	381	371	456	544	677	748	617	529	563	403	495	565	586	516	551	450	485	487	0	
Ma	760	979	966	983	1,140	1,226	1,193	1,167	1,123	937	936	786	841	847	882	849	817	811	796	780	771	772	774	747	805	675	885	759	704	551	671	538	518	629	741	960	851	865	947	946	958	833	907	857	840	862	817	930	940	829	749	752	0	
Q3	1,107	1,259	1,347	1,339	1,333	1,340	1,468	1,414	1,454	1,255	1,169	1,074	947	1,073	1,037	1,004	989	969	963	982	953	828	951	880	929	938	1,058	1,025	904	758	741	646	627	1,209	839	1,088	1,087	1,081	1,178	1,324	1,327	1,368	1,268	1,267	1,315	1,155	1,166	1,253	1,261	1,389	1,173	876	983	
2020	495	612	576	597	652																																																	

Canal Endémico Jurisdicción Sanitaria No. III de Cuautla de: Iras en menores de 5 años



FUENTE: SUIVE-1-2005; SUIVE-1-2007

PROCESO DE INFORMACION: DEPARTAMENTO DE EPIDEMIOLOGIA



TOTAL
52,335
53,128
50,358
45,510
34,876
35,324
30,977
302,508
30,977
45,510
53,128
2,932